

SNU

**ACTIVITY
&
COLORING BOOK**

Picture yourself here!

Stephen saved notes for a big quiz on SNU history. But when he opened the file on his laptop, the words were all jumbled! Help him to study by finding the unique key words.

311.234
▶379.45

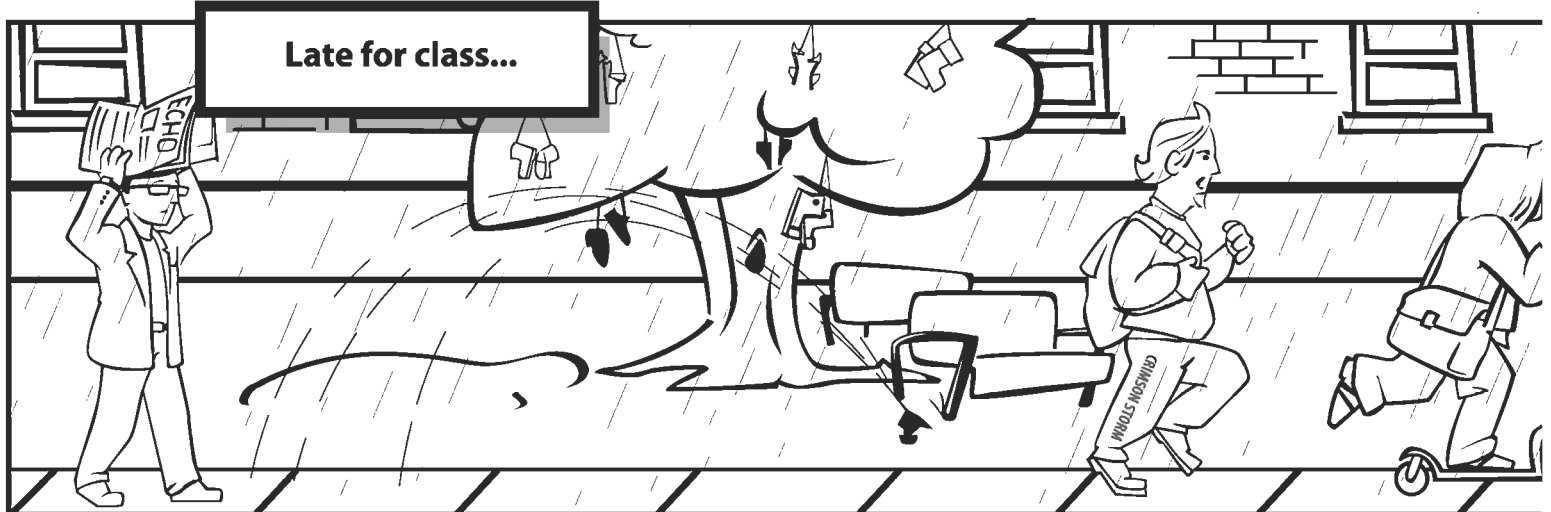
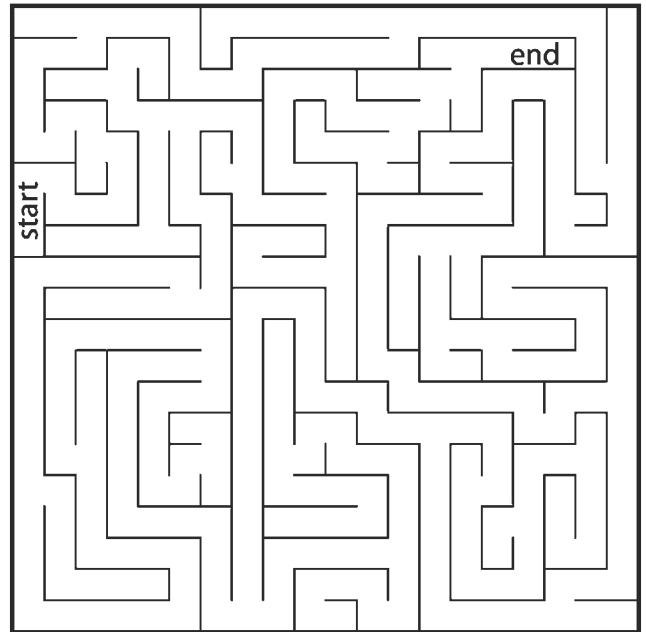
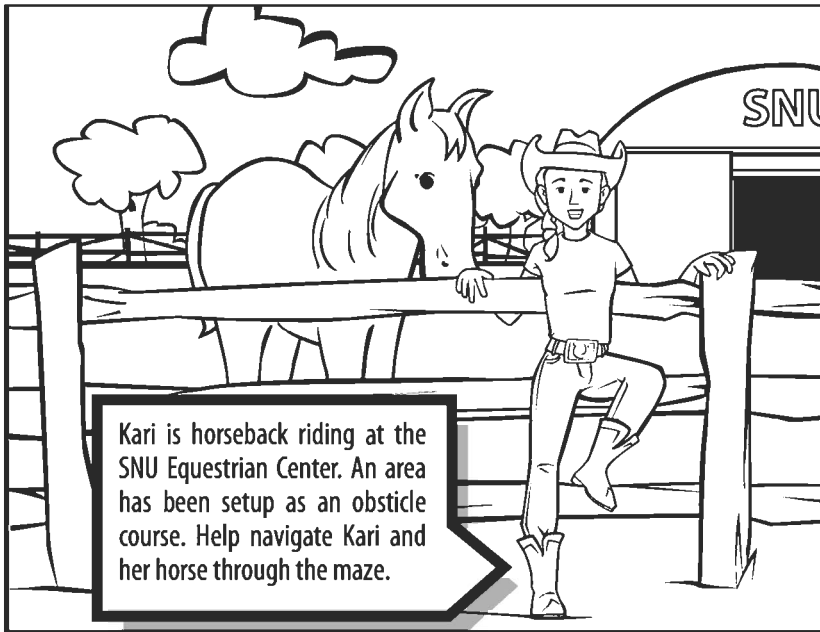


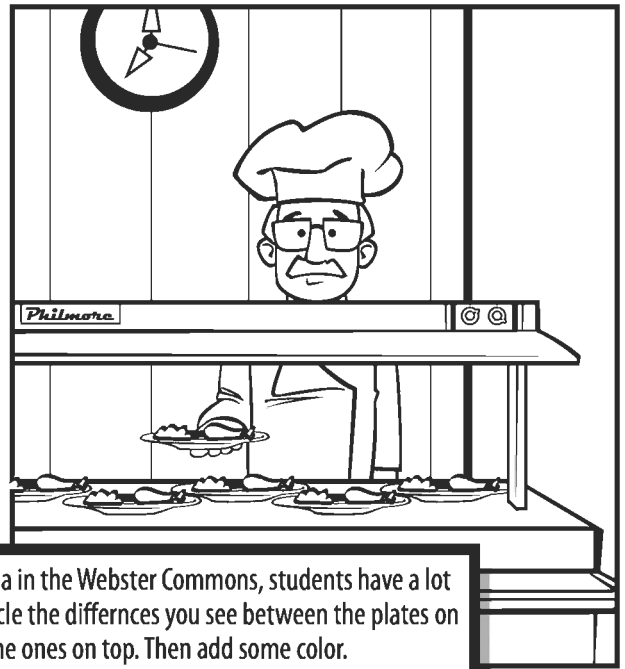
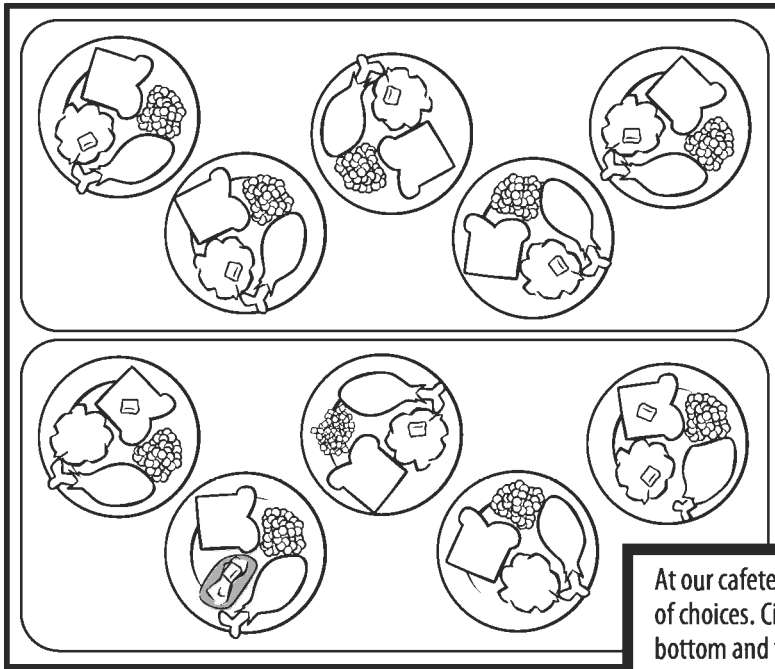
Home Insert Page Layout References Mailings Review View

Bethany
Bresee
Jernigan
Holiness
Webster
Nazarene
Asbury
Cantrell
Texas
Arkansas
Louisiana
Herrick
Oklahoma
Bracken
Culture
Christ

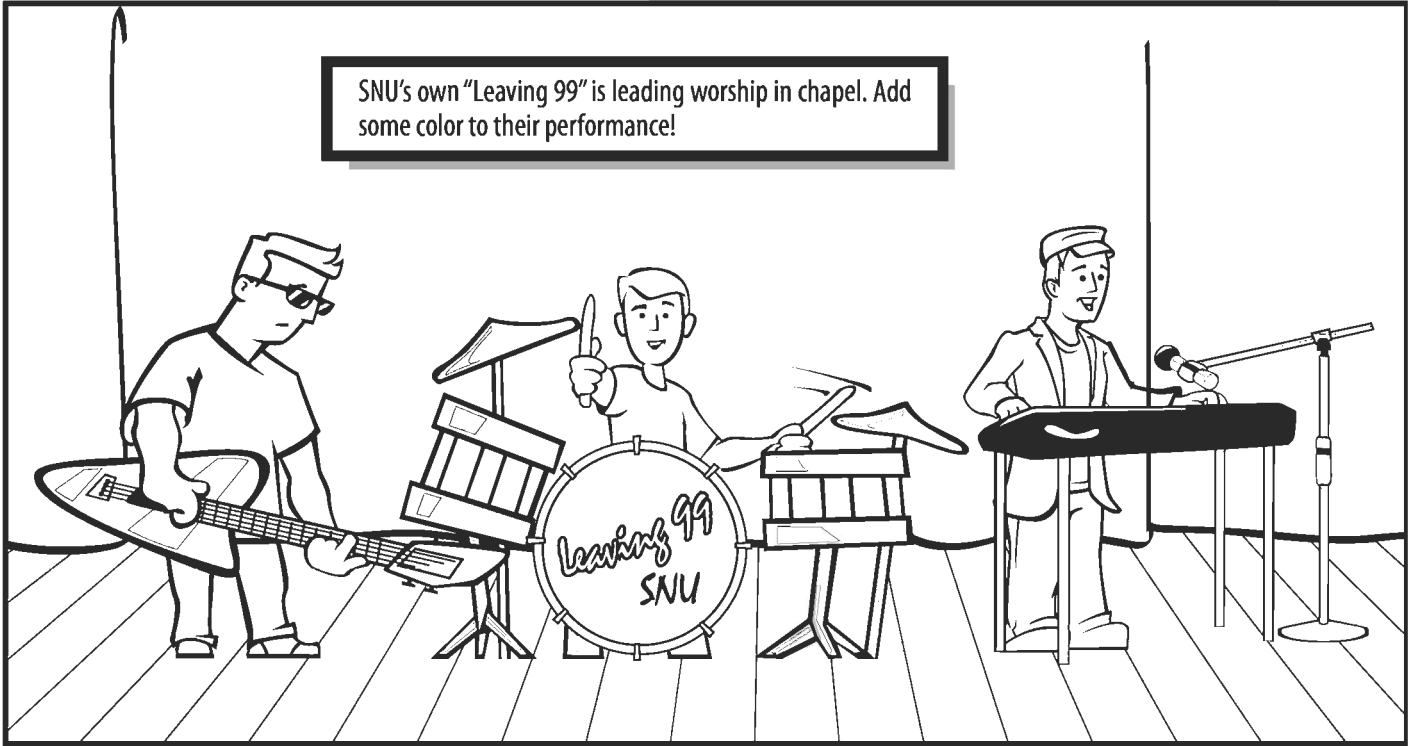
| | | | | | | | | | | | | | |
|---|---|---|---|---|---|---|---|---|---|---|---|---|---|
| Y | I | I | Z | O | A | N | A | I | S | I | U | O | L |
| J | N | B | C | Y | T | J | E | R | I | N | G | A | N |
| T | E | A | S | A | X | S | U | S | A | X | E | T | B |
| M | E | S | H | V | N | T | I | O | M | A | D | O | R |
| S | N | C | S | T | U | T | M | R | O | D | Y | K | A |
| W | E | B | S | T | E | R | R | Y | H | G | V | C | C |
| B | R | E | S | E | E | B | R | E | A | C | E | I | K |
| R | Z | X | N | E | S | U | C | U | L | T | U | R | E |
| C | A | Q | Z | A | B | U | Q | A | K | L | A | R | N |
| S | N | U | S | S | E | N | I | L | O | H | I | E | S |
| A | R | K | A | N | S | A | S | H | L | B | S | H | Z |

notes.doc 9:22 PM

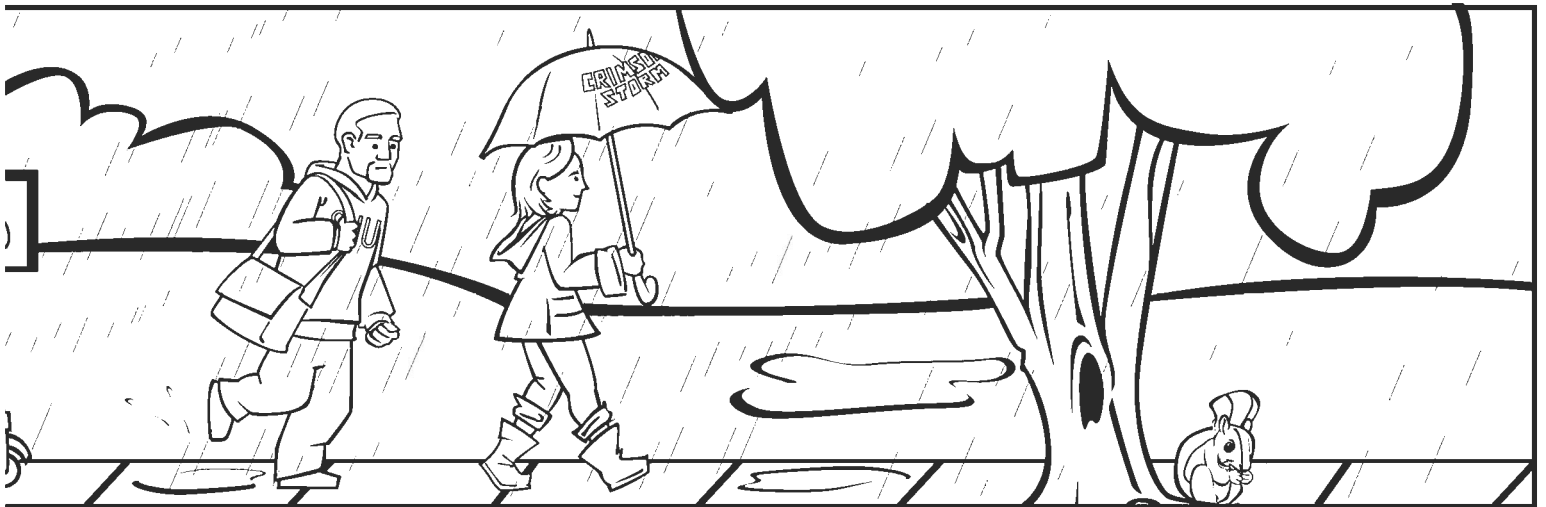




At our cafeteria in the Webster Commons, students have a lot of choices. Circle the differences you see between the plates on bottom and the ones on top. Then add some color.

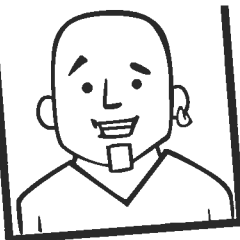


SNU's own "Leaving 99" is leading worship in chapel. Add some color to their performance!

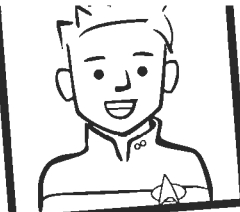




Erin Cole
Psychology



Vincent Lowe
History



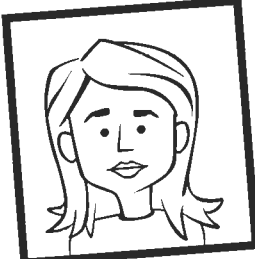
James T. Kurt
Music



Emily Jones
Urban Ministry



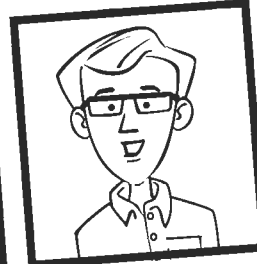
Josh Snape
Physics



Sarah Rogers
Pre-med



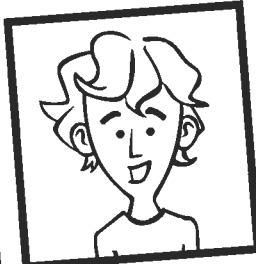
Alvin McCormick
Nursing



Jared Kent
English



Farris Philmore
Comm. Arts



Louis Rhodes
Business



Karen Gorman
Graphic Design



Arthur Grey
Music Ministry

Add some color to the *Arrow*, our yearbook.

what's within you?

Contact SNU at 800.648.9899

Or visit us online at snu.edu



Southern Nazarene University

CHARACTER | CULTURE | CHRIST



This coloring book is illustrated by Patrick Marston, Communication Arts Class of 2008