



# MUSIC

FOUR YEAR PLAN

SCHOOL OF MUSIC  
SOUTHERN NAZARENE UNIVERSITY





# MUSIC

## ABOUT

The SNU School of Music seeks to develop each student's musical passion to its fullest potential, foster a pursuit of excellence in all things, and provide a Christ-centered environment to deepen spiritual and musical growth.

Our faculty are professional musicians and instructors who help students achieve their goals of becoming a performer, music teacher, worship leader, music producer, or anything in between. Regardless of

program, music students will engage in classes that address the historical and theoretical aspects of music as well as have the opportunity to study one-on-one with qualified instructors. Performing with vocal and instrumental ensembles on campus and around the world is another vital part of the degree that results in unforgettable memories and lifelong friendships. We believe that making music is a joy and privilege; doing so for the glory of God is an honor!

## DEGREE PLAN

\*\*The courses listed are for this specific program and are in addition to the general education courses required for all students. See the General Education brochure or go to [snu.edu/gen-ed](http://snu.edu/gen-ed) for more information on those courses.

01

Survey of Music  
Fundamentals of Music  
Applied Piano  
Harmony I  
Aural Theory I  
Applied Piano

02

Harmony II  
Aural Theory II  
Applied Piano  
Harmony III  
Aural Theory III  
Applied Piano

03

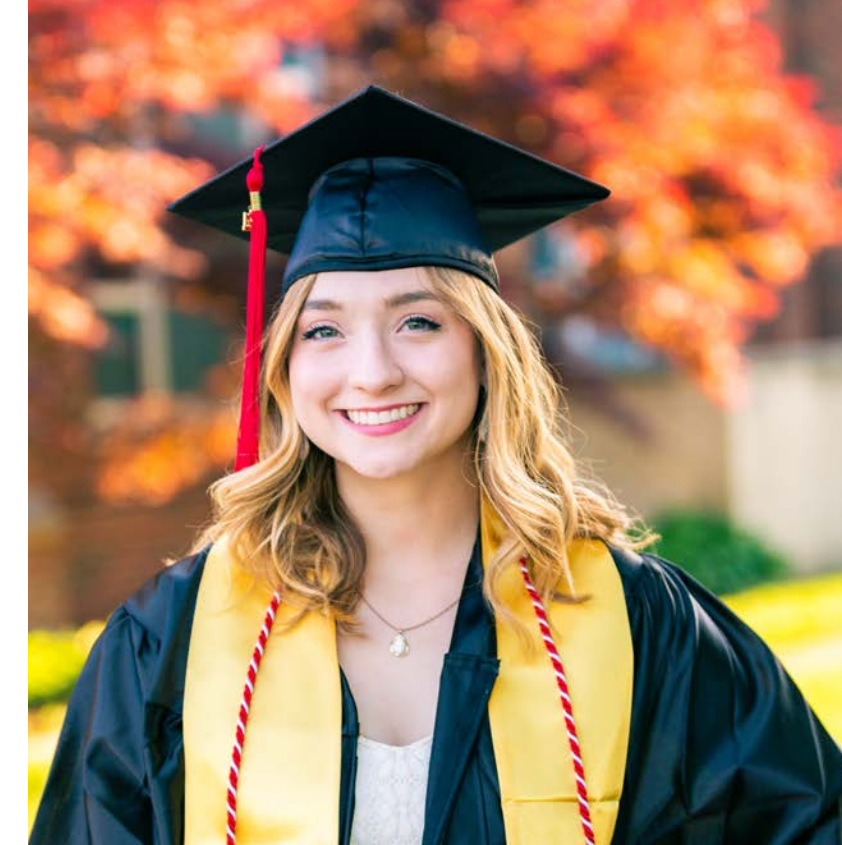
Music History I  
Conducting I  
Foreign Language I  
Music Elective  
Foreign Language II

04

Music History II  
Music, Ministry and the Church  
Music History III  
Music Elective  
Jr. Level Recital OR Capstone

\*Enrichment Seminar, Recital Attendance, Music Ensemble, will be taken each semester. Six credits of Applied lessons are also required.

\*The major must be supported by a minor of not fewer than 15 hours from a related department.



"I have grown as a pianist, singer, worship leader, and accompanist, through private lesson instruction and the great education and performance opportunities I have been afforded. The SNU School of Music has even helped connect me with various jobs in each of these areas."

-Leah Benn

PURPOSEFULLY DIFFERENT  
PURPOSEFULLY DIFFERENT  
PURPOSEFULLY DIFFERENT  
PURPOSEFULLY DIFFERENT  
PURPOSEFULLY DIFFERENT  
PURPOSEFULLY DIFFERENT  
PURPOSEFULLY DIFFERENT  
PURPOSEFULLY DIFFERENT



SCHOOL OF MUSIC

SOUTHERN NAZARENE UNIVERSITY

405.491.6345 | [ADMISSIONS@SNU.EDU](mailto:ADMISSIONS@SNU.EDU) | 6729 NW 39TH EXPRESSWAY | BETHANY, OKLAHOMA 73008 | [SNU.EDU](http://SNU.EDU)